



Feel the Freedom



Redefine the Weekend

Too often, getting away for a few days includes precious time wasted sitting in highway traffic, or hours spent waiting in airport lines. If you'd like a vacation from the ordinary, experience getting there in a CIRRUS, the world's best selling airplane.

When flying your own plane the journey becomes a part of the adventure, and the new freedom to travel when and where you want to go means unlimited destination possibilities.

Barriers that once existed to limit flying to all but the fortunate few have fallen away. With a personal transportation airplane, today's skies are wide open. Let the CIRRUS lifestyle lift you above the ordinary, and into the dual realm of excitement and efficiency. Experience the pure fun of journeys shared with the people you care about, and the satisfying adventure of destinations seen from a new perspective – the big, blue sky.





SR22-GTS



Fully Loaded

The uncompromising luxury ride SR22-GTS is the aircraft that has come to define CIRRUS as one of the world's true elite. Fly higher, faster, safer and farther with the premium CIRRUS flagship. Everything from top-of-the-line avionics to the powerful 310 hp engine make this plane a high-performance class leader. Broaden the horizon of your leisure-time adventures — ensuring that your journeys are always as memorable as the destination.



SR22-G2



The World's Best Selling Airplane

For three years and climbing, the CIRRUS SR22-G2 has been the world's best selling single-engine, four-passenger airplane. Today, the SR22-G2 defines the new standard of the impressive CIRRUS fleet. Simple to fly, yet sophisticated enough to trounce the toughest competition. Experience the SR22-G2 yourself by letting CIRRUS take you for a complimentary demo flight at a time and location convenient to your schedule. Feel the exhilaration of the new breed of airplane that has taken the aviation industry by storm.

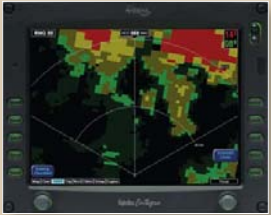
Safety Comes Standard

Nothing is more important to us than your safety. We pioneered the CIRRUS Airframe Parachute System (CAPS™) technology to give pilots and passengers one more option in the event of a serious in-flight emergency. When activated, the life-saving CAPS™ system launches a 55-foot diameter parachute that lowers the airplane to the ground while suspended securely beneath the parachute. The security and peace-of-mind provided by CAPS™ is unequalled, and comes standard with all CIRRUS aircraft as part of our role as the industry's safety leader.

CIRRUS revolutionized the industry by bringing the same dynamic advanced avionics into our cockpits that you'd find onboard the world's top commercial airlines. TAWS (Terrain Awareness Warning System), now a standard installation on all CIRRUS SRV, SR20 and SR22 aircraft, helps keep you clear of terrain and obstacles while SKYWATCH™ alerts you to airborne traffic. E-TAWS (Enhanced Terrain Avoidance Warning System) is also available complete with aural warning as an optional additional safety feature.

Our inadvertent icing protection system keeps critical surfaces clear of ice while you maneuver safely out of icing conditions. The innovative cuffed leading edge wing design allows increased stability and roll authority at slow speeds to provide greater stall protection.

Standard safety features also include high 'G' energy-absorbing seats, airframe roll cage, four-point harness restraint system, and airbag seatbelts.



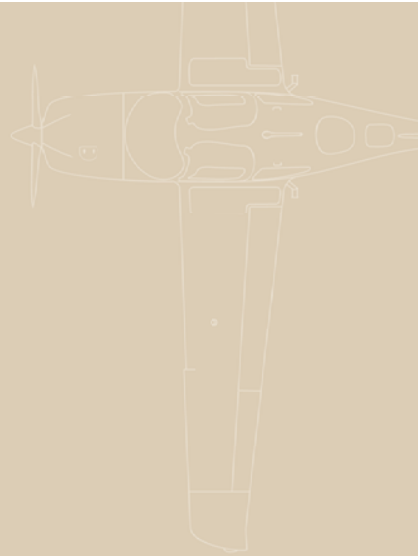
Whole airframe parachute recovery system

Advanced airline-style avionics and warning systems

Airbag seatbelts

Unique leading edge wing for stability & control

Inadvertent icing protection system





SR20-GTS



Smart Indulgence

The SR20-GTS is the passport into CIRRUS luxury that provides affordable indulgence at a price respecting your bottom line. Share the versatility, freedom and sheer fun of a CIRRUS with loved ones, and they'll see that the lifestyle machine quickly becomes a necessary luxury. Relax in an interior of refined craftsmanship, while you appreciate and enjoy an airplane that is the result of decades of technological and engineering advancements.



SR20-G2



Unparalleled Value

Interested in a substantial airplane that's practical and affordable? Whether you are a beginning student, an experienced pilot looking for reliable personal transportation, or a fleet customer needing to expand to a multiple-aircraft operation, consider the SR20-G2. This mid-range airplane is built to the same standards and finish of its best selling SR22-G2 brethren, which says a lot when pitted against the competition. A variety of options allow the functionality of a plane that is versatile, reliable and technologically advanced yet simple to fly and affordable to maintain.

Stellar Performer

Simply stated, you can't beat the performance of a CIRRUS. Fast and sleek, our composite structure achieves aerodynamic air superiority through years of innovative engineering standards. Our unique wing design balances your need for speed with safety and stability.

With an aggressive 310-horsepower available at your fingertips from the reliably rugged Continental engine, CIRRUS produces outstanding performance through a precise combination of low wind-resistant surfaces and raw power. Flight after flight, enjoy a ride that's smooth, efficient and free from the uncomfortable vibration present on lesser aircraft.

A CIRRUS promises the look and feel of a high-performance sports car with the safety features of a top touring sedan.



- Pilot and machine in harmony**
- Sleek exterior lines**
- Agile responsive handling**
- Sophisticated aerodynamic curves**
- Exceptional speed**





SRV-G2



Down to Earth

Think flying is a bit too complicated, or a little too expensive? Think again. The SRV-G2 offers the exceptional design and performance equated with owning a CIRRUS, at a price that can make your dreams of flying a new reality. This entry-level airplane more than meets the needs of the pilot who prefers to fly in daytime visual conditions but will not compromise outstanding safety and comfort.



Take Comfort

Like an agile sports car, speed should never compromise elegance or comfort. Our spacious 49-inch wide cabin, the most spacious in its class, has been created to keep you and your passengers relaxed in an atmosphere of luxurious ergonomic seating and superior climate controls.

Enormous gull-wing style doors allow for easy entry and egress from the aircraft while the unique rear window brings in additional light to create a spacious seating environment, even for backseat passengers.

XM Audio provides listening entertainment for passengers as they can enjoy live coast-to-coast channels via satellite. Oversized glass panel avionics screens allow everybody to monitor the flight's progress along a moving map display, keeping passengers at ease and informed of their location relative to the destination.



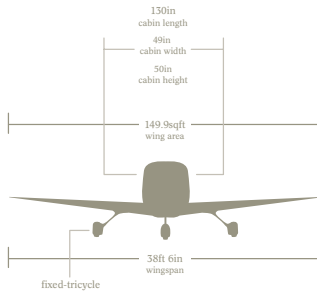
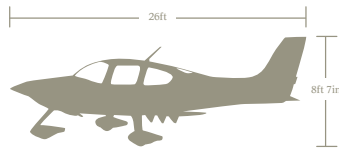
- Expansive panoramic windows**
- Intuitive side-yoke flight controls**
- Over-sized gull-wing doors**
- Spacious environment**
- Luxurious comfortable seating**



SR22-GTS | SR22-G2



78in constant speed



fixed-tricycle

Standard Features

- Cirrus Airframe Parachute System™ (CAPS)
- TCM IO-550-N, 310 hp, 6-point mount
- Terrain Awareness Warning System (TAWS)
- Airbag Seatbelt Restraints

Avionics

- EXP5000 Primary Flight Display (PFD)
- EXP5000 Multi-Function Display (MFD)
- GMA 340 Audio Panel
- GNS 430/250XL—with TAWS Autopilot 56SR
- GTX 327 Transponder

SR22-GTS

Includes all factory installed options* plus extended 3rd year warranty

SR22-G2 Options

- GNS 430/430, Autopilot 55X
- Ice Protection
- Platinum Engine
- Weather Datalink & Audio (XM)
- Real-Time Lightning Information (Stormscope™)
- WX Package (Stormscope®, Weather DataLink & XM)
- Traffic Information (SkyWatch™)
- Engine & Fuel Monitoring (EMax™)
- Electronic Approach Plates (CMax™)
- Enhanced Terrain Avoidance Warning System (E-TAWS)
- Flight Director
- Tinted Windows
- Polished Spinner
- Leading Edge Protectant

Performance

Takeoff	1020 ft
Takeoff (50' object)	1574 ft
Climb Rate	1304 ft/min
Stall Speed with Flaps	61 KIAS
Cruise Speed (75% power)	185 KTAS
Cruise Range with Reserve	700 nm
Maximum Range (55% power)	over 1000 nm
Landing Ground Roll	1141 ft
Landing Over 50' Object	2325 ft

Engine

Manufacturer	Continental
Model	IO-550-N
Horsepower	310

Design Weights & Loading

Maximum Gross Weight	3400 lbs
Standard Empty Weight	2250 lbs
Useful Load	1150 lbs
Usable Fuel Capacity	81 gal/486 lbs
Full Fuel Payload	664 lbs

CIRRUS was first to bring glass panel instrumentation technology to personal transportation airplanes. These new avionics help make flying intuitive and simple for the pilot, while the large, easy-to-read screens let passengers follow along on the moving map display and monitor the flight's progress.



SR22-GTS
Black Leather Interior available with GTS Black Exterior



SR22-G2
Sand & Onyx Leather Interior

Inspired by the world's finest automobiles



SR22-GTS
Ivory Leather Interior available with GTS Gold Exterior



SR22-G2
Ivory Leather Interior

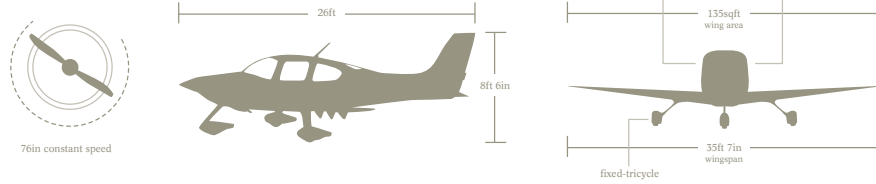


SR22-G2
Stone Leather Interior

*Factory installed options refers to any/all options available on the Aircraft Order Form appropriate for the model ordered.



SR20-GTS | SR20-G2



Standard Features

Cirrus Airframe Parachute System™ (CAPS)
TCM IO-360-ES, 200 hp
Terrain Awareness Warning System (TAWS)
Airbag Seatbelt Restraints

Avionics

EXP5000 Primary Flight Display (PFD)
EX5000 Multi-Function Display (MFD)
GMA 340 Audio Panel
GNC 430/250XL—with TAWS Autopilot 55SR
GTX 327 Transponder

SR20-GTS

Includes all factory installed options* plus extended 3rd year warranty

SR20-G2 Options

GNS 430/420, Autopilot 55SR
GNS 430/430, Autopilot 55X
3-Blade Propeller
Leather Interior
Weather Datalink & Audio (XM)
Real-Time Lightning Information (Stormscope®)
WX Package (Stormscope®, Weather DataLink & XM)
Traffic Information (SkyWatch™)
Engine & Fuel Monitoring (EMax™)
Electronic Approach Plates (CMax™)
Enhanced Terrain Avoidance Warning System (E-TAWS)
Flight Director
Tinted Windows
Polished Spinner
Leading Edge Protectant

Performance

†Takeoff	1446 ft
†Takeoff (50' object)	2064 ft
†Climb Rate	828 ft/min
Stall Speed with Flaps	54 KIAS
Cruise Speed (75% power)	156 KTAS
Cruise Range with Reserve (55% Power)	745 nm
Maximum Range (55% Power)	885 nm
Landing Ground Roll	1014 ft
Landing Over 50' Object	2040 ft

Engine

Manufacturer	Continental
Model	IO-360-ES
Horsepower	200

Design Weights & Loading

Maximum Gross Weight	3000 lbs
Standard Empty Weight	2070 lbs
Useful Load	930 lbs
Usable Fuel Capacity	56 gal./336 lbs
Full Fuel Payload	594 lbs

†Takeoff/climb performance @ 3000 lb gross wt, sea level, ISA

Our roomy 49-inch wide cabin—the most spacious in its class—has been designed to keep you and your passengers relaxed in an environment of luxurious ergonomic seating, superior climate controls and an onboard personal entertainment system.



SR20-GTS
Black Leather Interior available with GTS Black Exterior



SR20-GTS
Ivory Leather Interior available with GTS Gold Exterior



SR20-G2
Onyx Leather Interior



SR20-G2
Onyx Fabric Interior

Comfort and Elegance with Room for Four



SR20-G2
Sand & Onyx Leather Interior



SR20-G2
Ivory Leather Interior



SR20-G2
Stone Leather Interior



SR20-G2
Stone Fabric Interior

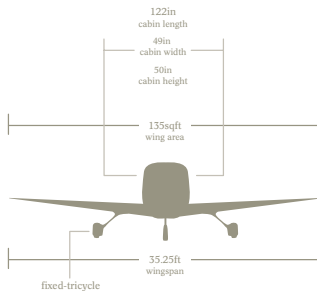
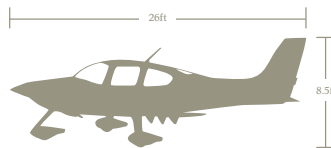
*Factory installed options refers to any/all options available on the Aircraft Order Form appropriate for the model ordered.



SRV-G2



76in constant speed



fixed-tricycle

Standard Features

Cirrus Airframe Parachute System™ (CAPS)
TCM IO-360-ES, 200 hp
Terrain Awareness Warning System (TAWS)
Airbag Seatbelt Restraints

Avionics

EXP5000 Primary Flight Display (PFD)
EXP5000C Multi-Function Display (MFD)
GMA 340 Audio Panel
GNC 420 GPS/COM
GTX 327 Transponder

SRV-G2 Options

Cross Country Package¹
Style Package²
Dual Alternator System
3-Blade Propeller
Front Wheel Fairing
Weather Datalink & Audio (XM)
Real-Time Lightning Information (Stormscope™)
WX Package (Stormscope® & XM)
Traffic Information (SkyWatch™)
Engine & Fuel Monitoring (EMax™)
Electronic Approach Plates (CMax™)
Enhanced Terrain Avoidance Warning System (E-TAWS)
Tinted Windows
Polished Spinner³
Leading Edge Protectant

Performance

†Takeoff	1446 ft
†Takeoff (50' object)	2064 ft
†Climb Rate	828 ft/min
Stall Speed with Flaps	54 KIAS
Cruise Speed (75% power)	150 KTAS
Cruise Range with Reserve (65% power)	635 nm
Maximum Range (55% power)	876 nm
Landing Ground Roll	1014 ft
Landing Over 50' Object	2040 ft

Engine

Manufacturer	Continental
Model	IO-360-ES
Horsepower	200

Design Weights & Loading

Maximum Gross Weight	3000 lbs
Standard Empty Weight	2050 lbs
Useful Load	950 lbs
Usable Fuel Capacity	56 gal/336 lbs
Full Fuel Payload	614 lbs

†Takeoff/climb performance @ 3000 lb gross wt, sea level, ISA

¹SRV-G2 Cross Country Package includes GNS 430, Autopilot 55SR, SRV-G2 Style Package includes leather interior, noise cancelling jacks, rear reading lights, rear cup holders, courtesy power jacks, HID landing light and front wheel fairing. *ONLY available with 3-blade propeller.

SRV Blue Exterior



SRV-G2
Standard Stone Fabric Interior

Avionics

for Your Primary Flight Display (PFD) and Multi-Function Display (MFD) Screens

Flight Director



EMax®



CMax®



Skywatch®



WX Package



E-TAWS



Flight Director is a visual reference to simplify flight by instrument navigation. The display consists of a "flying wedge," indicating the airplane's altitude and a set of "command bars," indicating the recommended altitude to maintain the selected course. When hand-flying, the pilot maneuvers the airplane to keep the flying wedge snugly into the inverted "V," or notch formed where the two command bars join.

EMax® Engine Monitoring displays pertinent engine information including Cylinder Head Temperature (CHT), Exhaust Gas Temperature (EGT), percent power and fuel flow. EMax® also computes nautical miles per gallon, remaining fuel at each way-point, lean assist and more.

Skywatch® is a transponder-based traffic awareness and warning system that works independently of ground-based radar sites. Nearby transponder-equipped aircraft can be displayed on a MFD screen and/or on the GPS.

Cmax® Electronic Approach Plates. Make your MFD more robust and improve the ease of single pilot IFR operations with electronic approach plates. Data is displayed where you need it most—on the full size 10.4" MFD screen not on your kneeboard.

WX Package: XM Weather, XM Audio Entertainment and Stormscope®. In-cockpit weather information is an invaluable resource for cross country pilots. Satellite datalink delivers information critical to pilots including NEXRAD, full-color moving map display weather overlays, METARs, AIRMETS, SIGMETs, TFRs, winds aloft and cloud-to-ground lightning strikes. Stormscope® completes the weather analysis by providing real-time cloud-to-cloud and intra-cloud lightning information. Included with weather datalink is XM Audio Entertainment, providing coast to coast channels live via satellite, controlled onboard the airplane with a personal remote. At your destination enjoy the Delphi XM MyFi—the world's first XM2go personal XM satellite radio receiver.

Decrease the risk of Controlled Flight Into Terrain (CFIT) accidents with the **Enhanced Terrain Avoidance Warning System (E-TAWS).** Forward seeing technology alerts you with aural warnings to hazards ahead of and below the airplane.

CIRRUS wants to take you flying

Call us today to inquire about a complimentary demo flight at an airport near you.

phone: (866)-333-3834

web: cirrusdesign.com





The Mind of an Engineer. The Heart of a Pilot.™

cirrusdesign.com
Cirrus Design Corporation
4515 Taylor Circle
Duluth, Minnesota
(866) 333-3834