



PRICING. PERFORMANCE. OPTIONS.

THE MIND OF AN ENGINEER. THE HEART OF A PILOT.



TWO CIRRUS AIRCRAFT MODELS BETTER

SR20 PRICES

VERSION 2.0 SUB TOTAL \$207,800

Avidyne FlightMax EX3000C Multi-Function Display
Garmin Avionics
GMA 340 Audio Panel
GNS 430 Color GPS/COM/NAV
GNC 250XL GPS/COM [back-up VFR GPS]
GTX 327 Transponder
GI 106 Indicator GPS/VOR/LOC/GS
S-TEC/Meggitt System Twenty/Single-Axis Autopilot
directional gyro [no heading bug]

VERSION 2.1 SUB TOTAL \$226,610

21 lbs over VERSION 2.0

Avidyne FlightMax EX5000C Multi-Function Display
Garmin Avionics
GMA 340 Audio Panel
GNS 430 Color GPS/COM/NAV
GNS 420 Color GPS/COM
GTX 327 Transponder
GI 102 GPS Indicator
S-TEC/Meggitt System Thirty/Two-Axis Autopilot/GPSS
HSI [Century NSD-1000]
dual alternator

VERSION 2.2 SUB TOTAL \$244,710

30 lbs over VERSION 2.0

Avidyne FlightMax EX5000C Multi-Function Display
Garmin Avionics
GMA 340 Audio Panel
Dual GNS 430 Color GPS/COM/NAV
GTX 327 Transponder
GI 106 Indicator GPS/VOR/LOC/GS
S-TEC/Meggitt System Fifty Five X/Two-Axis Autopilot
altitude preselect
SANDEL SN3308 EHSI
dual alternator

SR20 UPGRADES

UPGRADES WEIGHT COST 2.0 2.1 2.2

Emax Engine & Fuel Monitoring	7	\$5,750	▪	▪	▪
3 blade propeller	23	\$3,000	▪	▪	▪
leather interior	9	\$3,300	▪	▪	▪
WX-500 Stormscope*	8	\$9,500	▪	▪	
Skywatch* Traffic Information	13	\$21,500	▪	▪	
SANDEL SN3308 EHSI	4	\$4,500	▪		

2.0 VALUE PACKAGE WEIGHT COST 2.0 2.1 2.2

dual alternator system upgrade	12	\$2,400	▪		
Avidyne EX5000C	1	\$2,950	▪		
S-TEC/Meggitt System Thirty	2	\$3,650	▪		
HSI [Century NSD-1000]	2	\$6,900	▪		
package price [all four items]	17	\$11,510			

STD SR20 FEATURES

CIRRUS AIRFRAME PARACHUTE™	all electrical systems
Multi-Function Display	2 blade propeller
magnetic compass	HID landing light
digital clock/OAT	visors
annunciator panel	bolster switches
true airspeed indicator	eyeball air vents
flight & engine instruments	noise cancelling pwr jacks
single alt/dual battery	fabric interior

about the MULTI-FUNCTION DISPLAY



All CIRRUS aircraft are IFR certified and include – as standard equipment – dual GPS, a 10" multi-function display [MFD] and an autopilot. Additional avionics options can enhance your flying experience even further.

The Avidyne FlightMax EX5000C MFD is a high-resolution, active-matrix LCD that displays a contoured moving map based on GPS data with color-coded terrain and geographical features.

The **CIRRUS SR20** offers BETTER price-to-performance ratios, and is the most attractive airplane in its class. The 200-horsepower engine burns only 10.5 gallons per hour, and has an 800 nautical-mile range and up to a 950-pound useful load.

SR20 SPECS

AVIONICS

Avidyne, GARMIN, S-TEC/Meggitt

PERFORMANCE

takeoff	1341 ft
takeoff over 50' object	1958 ft
max rate of climb	920 ft/min
cruise speed @75%	160 KTAS
stall speed w/flaps	54 KIAS
maximum range	831 nm
landing ground roll	1014 ft
landing over 50' object	2040 ft

ENGINE

manufacturer	Continental
model	IO-360-ES/200hp

PROPELLER

manufacturer	Hartzell
diameter76"
description2 blade/constant speed

SPECIFICATIONS

length26'
height8' 6"
wingspan35' 7"
wing area135.2 sq ft
cabin length130"
cabin width49"
cabin height50"
landing gearfixed, tricycle

DESIGN WEIGHTS & LOADING

maximum gross weight3000 lbs
standard empty weight2050 lbs
maximum useful load950 lbs
usable fuel capacity56 gals/336 lbs

.. AND BEST

CIRRUS SR22

offers the BEST of all worlds. The 310-horsepower engine produces 1000 feet per minute climb rates through 12,000 feet, allowing you to soar farther and higher.

SR22 SPECS

AVIONICS

Avidyne, GARMIN, SANDEL, S-TEC/Meggitt

PERFORMANCE

takeoff1020 ft
 takeoff over 50' object1575 ft
 climb rate1400 ft/min
 cruise speed @75%180 KTAS
 stall speed with flaps59 KIAS
 maximum rangeover 1000 nm
 landing ground roll1140 ft
 landing over 50' object2325 ft

ENGINE

manufacturerContinental
 modelIO-550-N/310hp

PROPELLER

manufacturerHartzell
 diameter78"
 description3 blade/constant Speed

SPECIFICATIONS

length26'
 height8' 7"
 wingspan38' 6"
 wing area144.9 sq ft
 cabin length130"
 cabin width49"
 cabin height50"
 landing gearfixed, tricycle

DESIGN WEIGHTS & LOADING

maximum gross weight3400 lbs
 standard empty weight2250 lbs
 maximum load1150 lbs
 usable fuel capacity81 gals/486 lbs

SR22 PRICES

CONFIGURATION A SUB TOTAL \$289,400

Avidyne FlightMax EX5000C Multi-Function Display
 Garmin Avionics
 GMA 340 Audio Panel
 GNS 430 Color GPS/COM/NAV
 GNS 420 Color
 GTX 327 Transponder
 GI 102 CDI
 S-TEC/Meggitt System Thirty/Two-axis Autopilot/GPSS electric HSI

CONFIGURATION B SUB TOTAL \$307,500

9 lbs over CONFIGURATION A
 Avidyne FlightMax EX5000C Multi-Function Display
 Garmin Avionics
 GMA 340 Audio Panel
 Dual GNS 430 Color GPS/COM/NAV
 GTX 327 Transponder
 GI 106 CDI
 S-TEC/Meggitt System Fifty-Five X/Autopilot/Alt Preselect
 SANDEL SN3308 EHSI

SR22 UPGRADES

UPGRADES	WEIGHT	COST	A	B
Emax Engine & Fuel Monitoring	7	\$5,750	■	■
WX-500 Stormscope®	8	\$9,500	■	■
Skywatch® Traffic Information	13	\$21,500	■	■
Ice Protection	30	\$19,700	■	■
Primary Flight Display	1	\$24,500	■	■

STD SR22 FEATURES

CIRRUS AIRFRAME PARACHUTE™	all electrical systems
Multi-Function Display	3 blade propeller
magnetic compass	HID landing light visors
digital clock/OAT	bolster switches
annunciator panel	eyeball air vents
electric attitude indicator	noise cancelling pwr jacks
true airspeed indicator	leather or fabric interior
flight & engine instruments	
dual alternator/dual battery	



CIRRUS

about the OPTIONS

With advanced Cirrus avionics, you'll fly intelligently at the pinnacle of situational awareness. Most conventional round dials can be replaced by easy-to-interpret screens customizable for the way you like to fly.

PFD

FlightMax Entegra Primary Flight Display [PFD] is a flat panel LCD that displays traditional primary flight instrumentation including attitude indicator, horizontal situation indicator, altitude, airspeed and vertical speed.



ICE PROTECTION

The TKS-based ice protection system pumps an antifreeze solution to the leading edges of the wings, horizontal stabilizer and to the propeller.



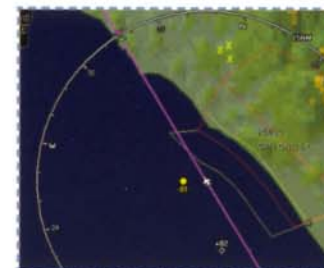
ENGINE MONITORING

The FlightMax EX5000C Emax Engine Monitoring displays engine information, fuel flow and computes nautical miles per gallon, fuel remaining and more.



STORMSCOPE® and SKYWATCH®

The WX-500 Stormscope® allows you to view lightning strikes on your MFD. Skywatch® monitors the airspace around your aircraft for nearby transponder equipped aircraft.



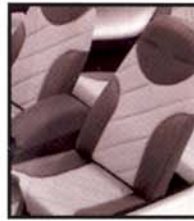
INTERIOR, EXTERIOR OPTIONS

SR20 EXTERIOR

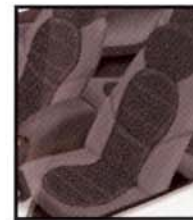


This brochure is designed to provide you with a general introduction to CIRRUS Products. CIRRUS reserves the right to discontinue or change the features, designs, materials, color and other specifications and the prices of their products, and to either permanently or temporarily withdraw any such products from the market without incurring any liability to any purchaser or prospective purchaser. Actual weights, specifications, exterior/interior paint scheme and colors may vary slightly.

SR20 INTERIOR



SR22 INTERIOR



SR22 EXTERIOR

