



Price List and Optional Equipment

Standard Features:

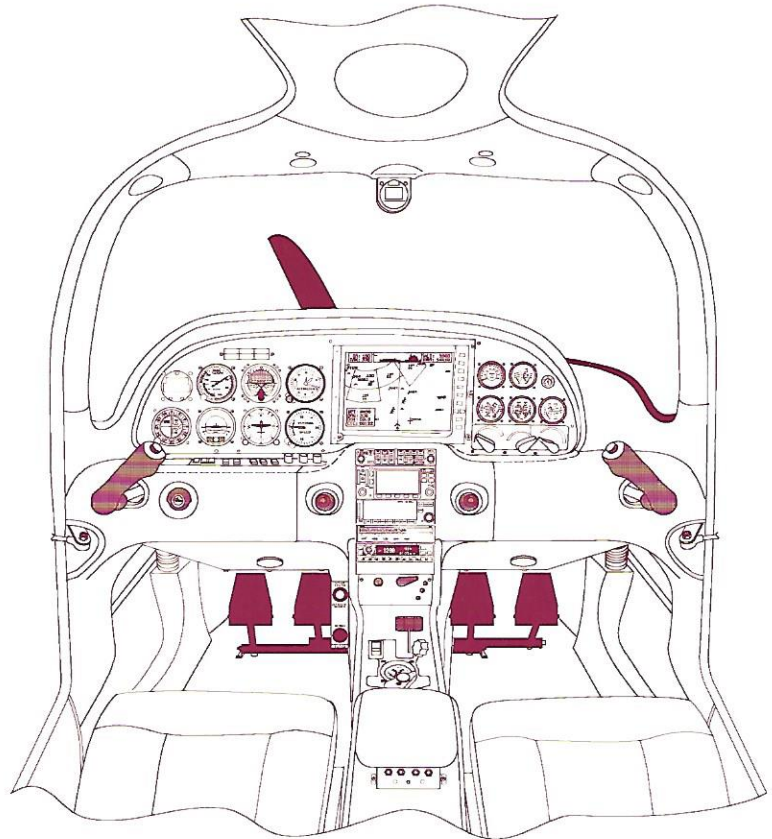
Cirrus Airframe Parachute System (CAPS)

- Visors
- Magnetic Compass
- Digital Clock / OAT
- Annunciator Panel
- True Airspeed Indicator
- Flight and Engine Instruments
- Standby Vacuum System

ARNAV ICDS-2000 Multifunction Display

- GARMIN GNS 430 color GPS/COM/NAV (Primary IFR GPS)
- GARMIN GMA 340 Audio Panel
- GARMIN GTX 327 Transponder

- Bolster Switches
- Eyeball Air Vents
- Fabric Interior
- 2-Blade Propeller
- Noise Canceling Power Jacks at Each Seat



Configuration "A"	Configuration "B"	Configuration "C"
Standard Features Plus:	Standard Features Plus:	Standard Features Plus:
GARMIN GNC 250XL GPS/COM (Back-Up VFR GPS)	GARMIN GNS 420 Color GPS/COM (Back-up IFR GPS)	GARMIN GNS 430 color GPS/COM/NAV (Back-up IFR GPS)
S-TEC/Meggitt System FortyX Single-Axis Autopilot	S-TEC/Meggitt System FiftyX Two-Axis Autopilot	S-TEC/Meggitt System Fifty FiveX Two-Axis autopilot
Directional Gyro (with Heading Bug)	HSI (Century NSD-360A) (Vacuum Driven)	HSI (Century NSD-1000) (Electric Driven)
GARMIN GPS/VOR/LOC/GS Indicator (GI 106)	GARMIN GPS/VOR/LOC Indicator (Second GPS/COM) (GI 102)	GARMIN GPS/VOR/LOC/GS Indicator (Second GPS/NAV/COM) (GI 106)
		Dual Alternator System
"A" Base Price... \$197,600	"B" Base Price... \$218,050 ("A" + \$20,450 9.11 lbs.)	"C" Base Price... \$233,950 ("A" + \$36,350 23.5 lbs.)
System FiftyX Autopilot Upgrade add...\$3,650 (2.6 lbs.)	WX-500 based Stormscope® add...\$9,500 (7.6 lbs.)	WX-500 based Stormscope® add...\$9,500 (7.6 lbs.)
	Dual Alternator System Upgrade add...\$2,400 (12.1 lbs.)	

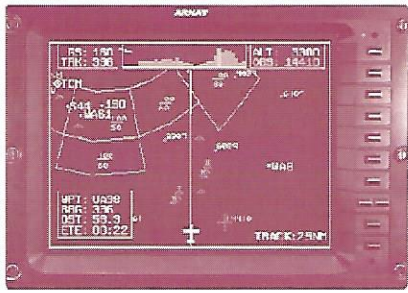
Additional Options: (available on any configuration)

- Leather Interior (4.0 lbs.).....\$3,300
- 3-Blade Propeller (23.3 lbs.)\$3,000

February, 2001

See back for more information

Equipment Description



ARNAV ICDS-2000 (10.4")
Moving map and aircraft checklists
(standard on all configurations)

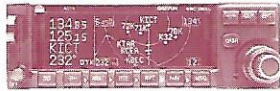
Optional Stormscope® (WX-500)
Information can be displayed on moving
maps between 25 and 200 nm range.



GARMIN GNS 430 color GPS/COM/NAV IFR approach certified GPS
CDI, information or moving map screens, 25kHz or 8.33kHz com
frequency spacing, Manual or GPS-driven frequency selection, Internal
annunciation and NAV/GPS switching, GPS or NAV/ILS display on CDI.



GARMIN GNS 420 Color GPS/COM
As 430 above without NAV/ILS receiver, Common or independent
flight plans.



GARMIN GNC 250XL GPS/COM
760 channel communications (25kHz spacing)
VFR GPS.



GARMIN GMA 340 Audio Panel
Intercom (stereo with music inputs), Marker beacon (with muting)
Pilot/co-pilot/passenger volume controls, Pilot/crew isolate.



GARMIN GTX 327 Transponder
Mode C, altitude encoding, count-up and count-down timers, VFR switch.



S-TEC/Meggitt System FortyX Single-Axis Autopilot - Heading track, GPSS
Roll Steering Mode, GPS/VOR/REV/LOC Coupling, Course Intercept Capability.



S-TEC/Meggitt System FiftyX Two-Axis Autopilot - Heading Track, GPSS Roll
Steering Mode, Altitude Hold, Vertical Speed Command, Course Intercept Capability,
GPS/VOR/REV/LOC Coupling.



S-TEC/Meggitt System Fifty FiveX Two-Axis Autopilot - Heading Track, GPSS Roll
Steering, Altitude Hold, Digital Vertical Speed Command, Course Intercept Capability.
GPS/VOR/GS/REV/LOC Coupling.



Century NSD-360A
Vacuum Gyro
Slaved Compass
Autopilot Heading System

Century NSD-1000
Electric Gyro
Slaved Compass
Autopilot Heading System

February, 2001

Cirrus Design reserves the right to change prices, availability of packages and options without notice. Your Purchase Agreement is the final authority as to terms and conditions of purchase of a Cirrus SR20 airplane. Weights given are approximations only and may vary on any individual aircraft. Options may not be possible in certain combinations.



Cirrus Design Corporation
4515 Taylor Circle
Duluth, MN 55811

(218) 727-2737
fax (218) 727-2148
www.cirrusdesign.com